



## GLASSWASHER P-41

To wash 30 baskets/hour. 400x400mm racks. Max. loading height: 280mm.



WARE WASHING  
COMMERCIAL GLASSWASHERS



### FEATURES AND BENEFITS

- ✓ Manufactured from catering grade stainless steel and incorporating top quality components.
- ✓ Double skinned door with high efficiency seal, ensuring thermal and acoustic insulation. Magnetic door micro-switch.
- ✓ Easy use electro/mechanical control panel.
- ✓ Pre-set 2 min wash cycle.
- ✓ Removable stainless steel rack holders ensure even distribution of wash water without dead zones. Precision positioned water jets guarantee optimum washing result for even the most stubbornly stained glasses. Easy to assemble, boltless rinse spray arms.
- ✓ A double filter system provides effective wash pump protection that is easily removed (for maintenance and cleaning) and replaced, without tools.
- ✓ The P-35 incorporates a wash tank and independent rinse boiler.
- ✓ Designed for quick and easy maintenance.

### SALES DESCRIPTION

Capacity by basket: 20 glasses of Ø8cm. each.

Hourly output: 30 baskets or 600 glasses.

- ✓ **GUARANTEED DISINFECTION** in compliance with DIN 10534 Norm.

### INCLUDES

- ✓ Rinse aid pump.
- ✓ 1 mixed basket.
- ✓ 1 open basket.
- ✓ 1 small cutlery basket.

### ACCESSORIES

- ☐ Stands for glass- and dishwashers
- ☐ Dosing equipments
- ☐ Manual water softeners
- ☐ Automatic water softeners
- ☐ 400X400 mm. baskets
- ☐ Inserts, supplements & similar
- ☐ High Feet Kit
- ☐ Reverse Osmosis device OS-140P



**sammic** | [www.sammic.com](http://www.sammic.com)  
Food Service Equipment Manufacturer

Polígono Basarte, 1.  
20720 Azkoitia, Spain

phone +34 943 15 72 36  
[sales@sammic.com](mailto:sales@sammic.com)



Project

Date

Item

Qty

Approved

product sheet  
updated 06/05/2020



## GLASSWASHER P-41

To wash 30 baskets/hour. 400x400mm racks. Max. loading height: 280mm.



### SPECIFICATIONS

Basket dimensions: 400 mm x 400 mm

Maximum glass height: 280 mm

Cycle duration: 120 "

Production baskets/hour: 30

Boiler capacity: 3.2 l

Wash tank capacity: 16 l

Water consumption/cycle: 2.3 l

### Loading

✓ Pump: 220 W / 0.3 Hp

✓ Tank: 1500 W

✓ Boiler: 2000 W

✓ Total loading: 2220 W

### External dimensions (WxDxH)

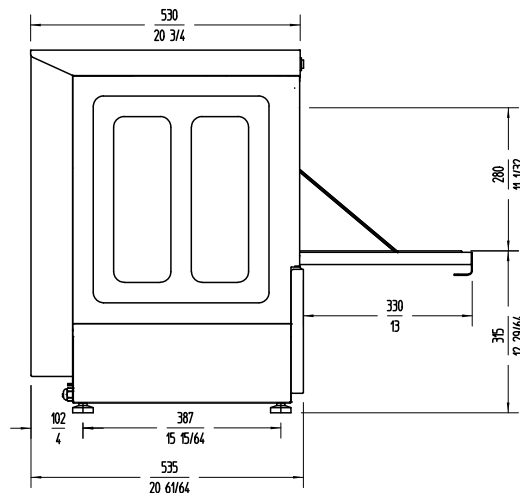
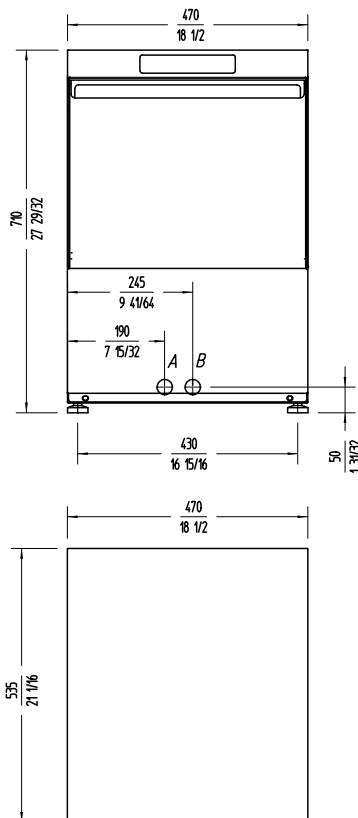
✓ Width: 470 mm

✓ Depth: 535 mm

✓ Height: 710 mm

Net weight: 39 Kg

Noise level (1m.): <70 dB(A)



### AVAILABLE MODELS

1302000	Glasswasher P-41 230/50/1
1302001	Glasswasher P-41 220/60/1
1302002	Glasswasher P-41 230/50/1 (R)
1302003	Glasswasher P-41 230/50/1 DD
1302004	Glasswasher P-41 230/50/1 (AUS)
1302005	Glasswasher P-41B 230/50/1 DD (with drain pump)
1302006	Glasswasher P-41 110/60/1
1302010	Glasswasher LV-250/P-41 110/60/1

\* Ask for special versions availability

**sammic** | [www.sammic.com](http://www.sammic.com)  
Food Service Equipment Manufacturer

Polígono Basarte, 1.  
20720 Azkoitia, Spain

phone +34 943 15 72 36  
[sales@sammic.com](mailto:sales@sammic.com)



Project

Date

Item

Qty

Approved

WARE WASHING  
COMMERCIAL GLASSWASHERS

product sheet  
updated 06/05/2020