



DISHWASHER S-100

2.5 kW wash tank and 7.5 kW boiler



WARE WASHING
PASS-THROUGH DISHWASHERS



- ✓ Suitable for straight in line and corner situations.
- ✓ Intuitive use.
- ✓ Top and bottom wash arms.
- ✓ Catering grade stainless steel construction (AISI 304 2B).
- ✓ Its double skinned hood ensures thermal and acoustic insulation and energy saving.
- ✓ Lifting bar activated hood opening.
- ✓ Magnetic hood micro-switch.
- ✓ Hood activated, auto cycle start.
- ✓ Rounded finish interior ensures no accumulation of dirt.
- ✓ Electronic, watertight, high-performance control panel.
- ✓ Wash and rinse temperature display.
- ✓ Precision positioned water jets guarantee optimum washing result for even the most stubbornly stained glasses.
- ✓ Easy to assemble, boltless rinse spray arms.
- ✓ Completely rounded, stainless steel wire rack support and guide.
- ✓ Double filter system provides effective wash pump protection.
- ✓ Easily removable dispersers and filters for cleaning and maintenance. No tools needed.
- ✓ Equipped with adjustable thermostats in tank and boiler and safety thermostat in boiler.
- ✓ Height-adjustable feet.
- ✓ Designed for quick and easy maintenance. Fast access to components for on-site maintenance.
- ✓ 100% tested.

SALES DESCRIPTION

Commercial pass-through dishwasher with a max. loading height of up to 400 mm and 3 wash cycles with thermal cycle delay option included. A stainless steel, top of tank filter system is also included as standard.

- ✓ **GUARANTEED DISINFECTION** in compliance with DIN 10534 Norm.
- ✓ **THERMAL LOCK** function: Sanitization guarantee. Ensures that the rinsing will be carried out only when the ideal temperature for disinfecting the dishes has been reached.
- ✓ **TEMPERATURE DISPLAY** to visually check this critical operating parameter. Useful for HACCP management systems.
- ✓ Sturdy and reliable.
- ✓ Maximum productivity thanks to shorter cycles.
- ✓ Stainless Steel, sturdy and resistant washing arms that do not get damaged.
- ✓ Tank capacity above average: it takes more time to saturate the water of debris.
- ✓ 1.2 Hp wash pump: optimal washing results.

INCLUDES

- ✓ Rinse aid pump.
- ✓ 1 open basket.
- ✓ 1 plate basket.
- ✓ 1 cutlery basket.
- ✓ Stainless steel top-of-tank filter set.

ACCESSORIES

- ☐ Dosing equipment
- ☐ Tables for dishwashers P/X/S (pass-through model)
- ☐ Manual water softeners
- ☐ Automatic water softeners
- ☐ 500 x 500 mm. baskets
- ☐ Inserts & supplements
- ☐ High Feet Kit
- ☐ Booster pump kit
- ☐ Reverse Osmosis device OS-140P



sammic | www.sammic.com
Food Service Equipment Manufacturer

Polígono Basarte, 1.
20720 Azkoitia, Spain

phone +34 943 15 72 36
sales@sammic.com



Project

Date

Item

Qty

Approved

product sheet
updated 09/03/2021



DISHWASHER S-100

2.5 kW wash tank and 7.5 kW boiler



SPECIFICATIONS

Basket dimensions: 500 mm x 500 mm
Maximum glass height: 400 mm

Cycles: 3
Cycle duration: 60 " / 120 " / 180 "
Production baskets/hour: 60 / 30 / 20

- ✓ Boiler capacity: 10 l
- ✓ Wash tank capacity: 40 l
- ✓ Water consumption/cycle: 3.5 l

Loading

- ✓ Pump: 880 W / 1.2 Hp
- ✓ Tank: 2500 W
- ✓ Boiler: 7500 W
- ✓ Total loading: 8380 W

External dimensions (WxDxH)

- ✓ Width: 640 mm (: 732 mm)
- ✓ Depth: 756 mm (: 860 mm)
- ✓ Height: 1920 mm / 1468 mm

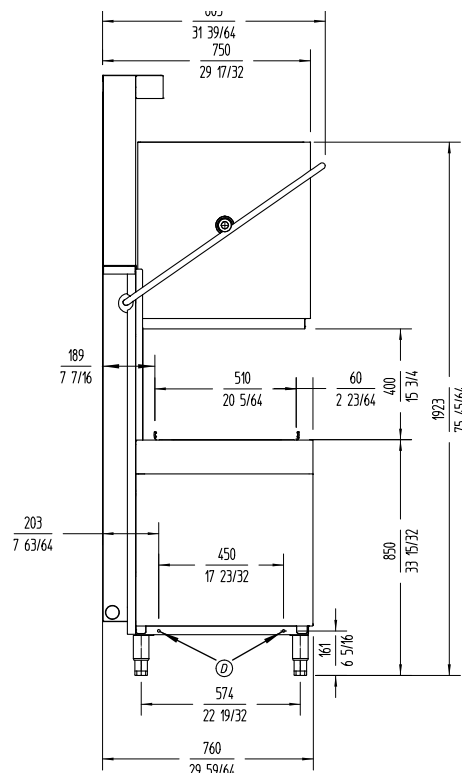
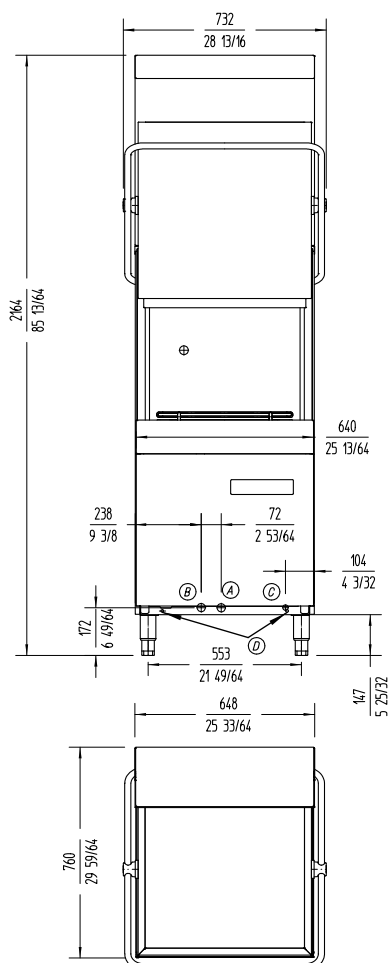
Net weight: 115 Kg

Wash temperature: 65 °C

Rinse temperature: 90 °C

Net weight: 115 Kg

Noise level (1m.): <70 dB(A)



AVAILABLE MODELS

1302300	Dishwasher S-100 400/50/3N
1302301	Dishwasher S-100 400/50/3N DD
1302302	Dishwasher S-100 230/50/1 DD
1302303	Dishwasher S-100 220/60/3
1302304	Dishwasher S-100B 400/50/3N (with drain pump)
1302305	Dishwasher S-100B 400/50/3N DD (with drain pump)
1302306	Dishwasher S-100B 230/50/1 DD (with drain pump)
1302307	Dishwasher S-100B 220/60/3 (with drain pump)
1302308	Dishwasher S-100C 400/50/3N (with break tank and drain pump)
1302309	Dishwasher S-100C 400/50/3N DD (with break tank and drain pump)
1302310	Dishwasher S-100C 230/50/1 DD (with break tank and drain pump)
1302311	Dishwasher S-100C 220/60/3 (with break tank and drain pump)

* Ask for special versions availability

sammic | www.sammic.com
Food Service Equipment Manufacturer

Polígono Basarte, 1.
20720 Azkoitia, Spain

phone +34 943 15 72 36
sales@sammic.com



Project

Date

Item

Qty

Approved

WARE WASHING
PASS-THROUGH DISHWASHERS

product sheet
updated 09/03/2021